

There are a lot of reasons to avoid generics. Many are still crawling on your plants.

Avid® miticide/insecticide is a proven standard in mite and leafminer control. Growers continue to depend on it for unsurpassed control of these pests.

In addition, Avid provides these benefits:

- Rain-fast within hours of application, with no unsightly residue and very little odor.
- Prevents damage to plants—pests stop feeding on plant tissue within hours of ingestion.
- Optimized for the highest level of crop tolerance.
- Ideal for rotation in resistance management programs due to its unique chemistry and mode of action.

How Avid works.

Avid penetrates the leaf surface to form a reservoir of active ingredient inside the leaf tissue. This reservoir provides long-lasting residual activity against damaging foliar-feeding insects and mites. Once ingested through feeding or direct contact, Avid targets the pests' nerve receptors. Paralysis sets in within hours, and pests are no longer able to feed. They die within two to four days.

Considering generics? First, weigh the risks.

Formulating a miticide/insecticide product with abamectin is a highly complex process. Loss of the chemical's full efficacy is a constant risk.

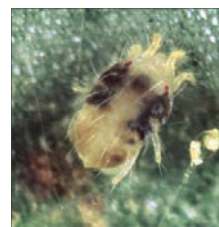
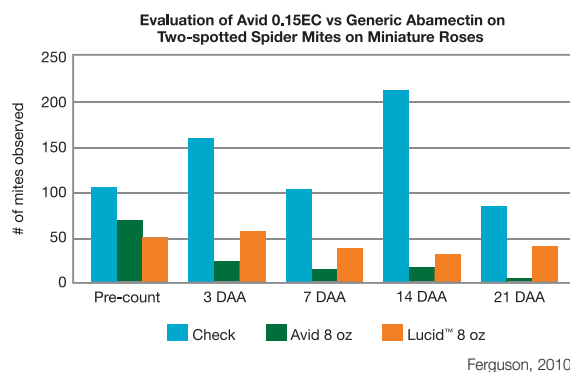
While the generics compare themselves to Avid, Syngenta is the original developer and has the only patented and proven purification process that filters out the less-active avermectin strains, leaving only the most potent active ingredient for the highest level of pest control. You've only got one chance to get mites under control. So, make it count.

- Engineered for maximum leaf penetration and uptake to provide extended residual control that is effective, even under tough conditions.
- Formulated for extended storage stability, offering peace of mind and confidence.
- Most widely used miticide in the industry.

Avid vs. generic abamectin.

There is a difference.

This bar graph shows the superior mite control obtained with Avid versus a generic abamectin product.



A variety of uses.

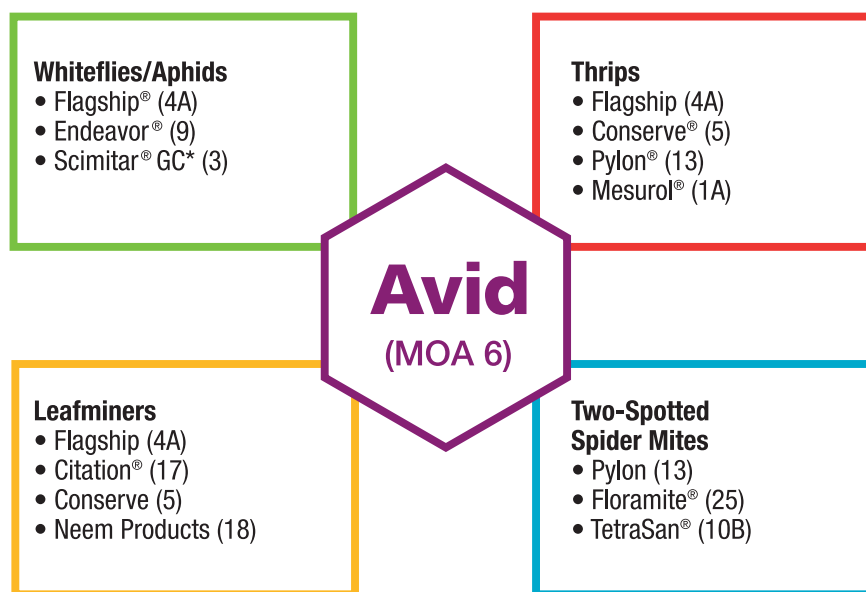
Avid is formulated and registered to work in shade houses and greenhouses, as well as with field-grown ornamentals. It is also effective on foliage plants, Christmas trees and other woody ornamentals. Avid provides tank-mix flexibility with a 12-hour REI (re-entry interval), offering next-day access to the greenhouse or field.

An important rotational tool.

To reduce the potential for resistance development, consider these resistance management guidelines:

- Apply the label rates for each pest.
- Begin applications when immature stages are first observed.
- Depending on the pest, make 2–3 applications 7–10 days apart.
- Rotate to other products with different MOAs for 3–4 weeks.
- Use in conjunction with beneficial predators.

Because of its unique mode of action and broad-spectrum activity on key ornamental pests, Avid is an important rotational tool for most pest management strategies. Use Avid in programs with other effective products registered on similar pests in ornamentals. These solutions are listed by their brand name with their mode of action in parentheses.



*Scimitar GC is a Restricted Use Pesticide

NOTE: Products identified are representative of those chemical classes listed and are not meant to be inclusive of all available products.

Call 1-866-SYNGENT(A) (796-4368) to contact the Syngenta Customer Center and learn more.



The one online information source with the innovative services and technologies to help you manage your turf and ornamental needs. www.GreenCastOnline.com

